



GROUP 70
INTERNATIONAL

Architecture • Planning
Interior Design
Environmental Services

Group 70 International, Inc.
723 Bishop Street, 25th Floor
Honolulu, Hawaii 96813-4907
Phone (808) 523-8844
Fax (808) 523-8874

THIS WORK WAS PREPARED BY ME OR UNDER MY SUPERVISION AND CONSTRUCTION OF THIS PROJECT WILL BE UNDER MY SUPERVISION.

Description and Date of this project is as defined in Section 17 of the General Requirements. This is not to be construed as a contract and is subject to the terms and conditions of the contract.

01/28/08
Registered Seal of the Licensed

REVISIONS

No./Date	Description

PROJECT TITLE

Maui Hyatt
Timeshare Design Services

FILENAME: EXTEL-A96.dwg

DRAWING TITLE

OVERALL MAUKA ELEV 'B'

SCALE: 1"=16'

DRAWN BY: CHECKED BY:

PROJECT NO.
24050-13

DATE:
19 OCT 08

DRAWING NO.

A-202A



EXHIBIT 14



GROUP 70
INTERNATIONAL

Architecture • Planning
Interior Design
Environmental Services

Group 70 International, Inc.
925 Redwood Street, 15th Floor
Honolulu, Hawaii 96813-4377
Phone (808) 523-8844
Fax (808) 523-6874

THIS WORK WAS PREPARED BY ME OR UNDER MY SUPERVISION AND CONTROL. I AM A REGISTERED PROFESSIONAL ARCHITECT IN THE STATE OF HAWAII. I AM NOT PROVIDING ANY DESIGN OR CONSTRUCTION SERVICES TO ANY OTHER PARTY.

04/28/04
Registration No. of the Licensee

REVISIONS

No./Date	Description

PROJECT TITLE

Maui Hyatt
Timeshare Design Services

FILENAME: EXTEL-B-96.dwg

DRAWING TITLE

OVERALL MAKAI ELEV. B

SCALE: 1"=16'

DRAWN BY: CHECKED BY:

PROJECT NO.
24050-13

DATE:
30 OCT 03

DRAWING NO.

A-204A

BUILDING VIEWED AT ANGLE

(13) 3 BR (12) 3 BR 2 BR BELOW (11) 2 BR (10) 2 BR (9) 2 BR (8) 2 BR (7)

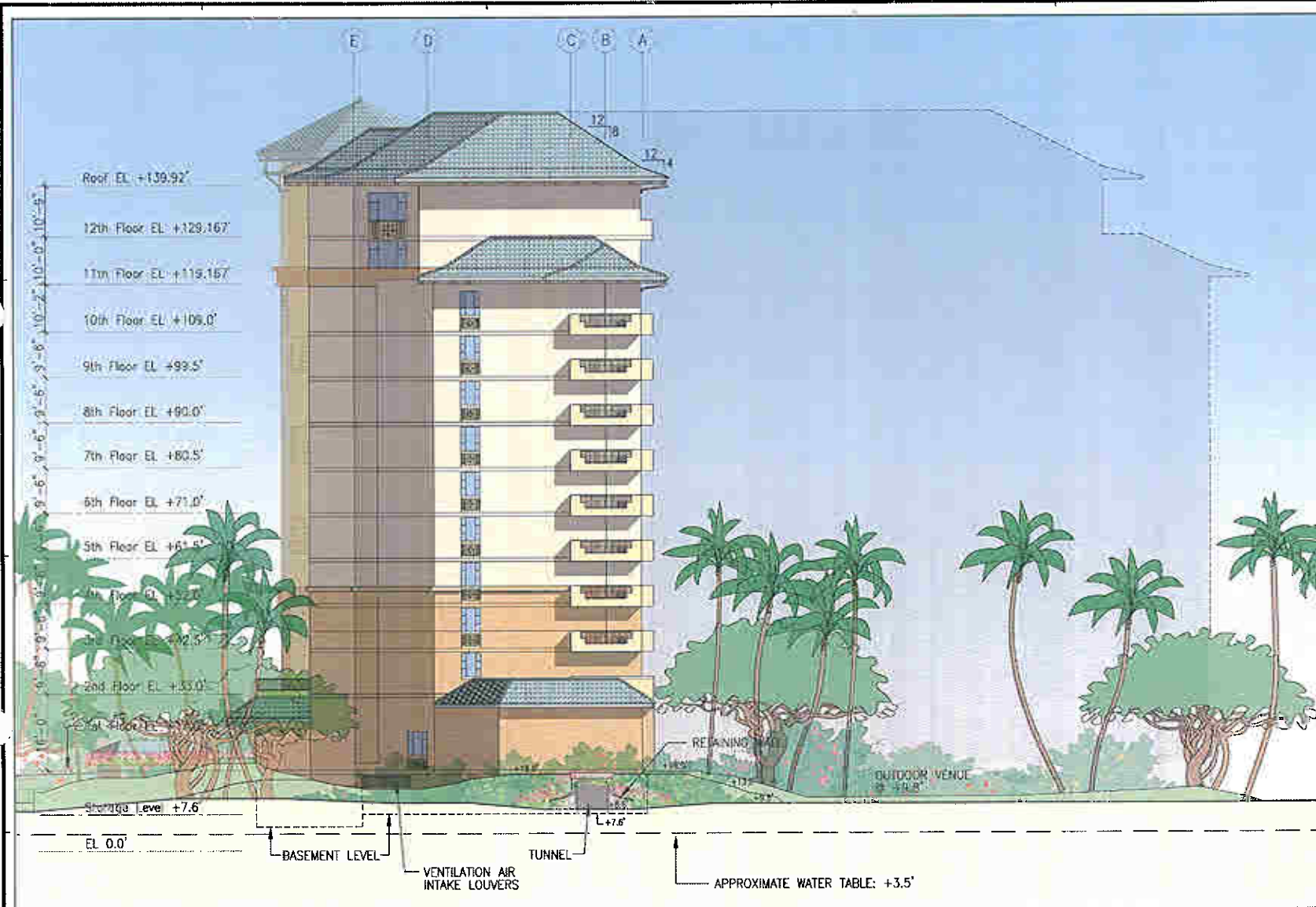
- Roof EL +139.92'
- 12th Floor EL +129.167'
- 11th Floor EL +119.167'
- 10th Floor EL +109.0'
- 9th Floor EL +99.5'
- 8th Floor EL +90.0'
- 7th Floor EL +80.5'
- 6th Floor EL +71.0'
- 5th Floor EL +61.5'
- 4th Floor EL +52.0'
- 3rd Floor EL +42.5'
- 2nd Floor EL +33.0'
- 1st Floor EL +17.0'

Storage Level +7'-6"
EL 0.0'



LOBBY COUNTRY STORE POOL BATHROOMS

EXHIBIT 15



GROUP 70
INTERNATIONAL

Architecture • Planning
Interior Design
Environmental Services

Group 70 International, Inc.
925 South Street, 16th Floor
Honolulu, Hawaii 96813-4397
Phone (808) 523-5666
Fax (808) 523-5674

THIS WORK WAS PREPARED BY ME OR UNDER MY SUPERVISION AND CONSTRUCTION OF THIS PROJECT WILL BE UNDER MY OBSERVATION.

Registration and Observation of this project is as defined in Article 1.1 of the Hawaii Statutes Chapter 100, 100-10, Chapter 10, Professional Engineers, Land Surveyors, and Landscape Architects.

6/20/08
Expiration Date of the License

REVISIONS

No./Date	Description

PROJECT TITLE

Maui Hyatt
Timeshare Design Services

FILENAME: EXTEL-C96_BASEMENT-STUD

DRAWING TITLE

WEST ELEVATION

SCALE: 1"=10'

DRAWN BY: CHECKED BY:

PROJECT NO.
24050-13

DATE:
30 MAY 07

DRAWING NO.

A-205

EXHIBIT 16



GROUP 70
INTERNATIONAL

Architecture • Planning
Interior Design
Environmental Services

Group 70 International, Inc.
925 Bethel Street, 14th Floor
Honolulu, Hawaii 96813-6307
Phone (808) 523-5866
Fax (808) 513-8874

THIS WORK WAS PREPARED BY ME OR UNDER MY SUPERVISION AND CONSTRUCTION OF THIS PROJECT WILL BE UNDER MY SUPERVISION.

Signature and description of this project as defined in Article 12 of the Hawaii Professional Law, Title 16, Chapter 16, Professional Engineers, Architects, and Land Surveyors and Engineers.

11/20/06
Expiration Date of the License

REVISIONS

No./Date	Description

PROJECT TITLE

Maui Hyatt
Timeshare Design Services

FILENAME: EXTEL-0.dwg

DRAWING TITLE

**EAST ELEVATION
NAPILI TOWER SIDE**

SCALE: 1"=20'

DRAWN BY: CHECKED BY:

PROJECT NO.
24050-13

DATE:
19 SEP 06

DRAWING NO.

A-206

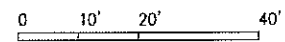


EXHIBIT 17